

DGE DEUTSCHE GESELLSCHAFT FÜR
ELEKTRONENMIKROSKOPIE



Universitätsklinikum
Hamburg-Eppendorf

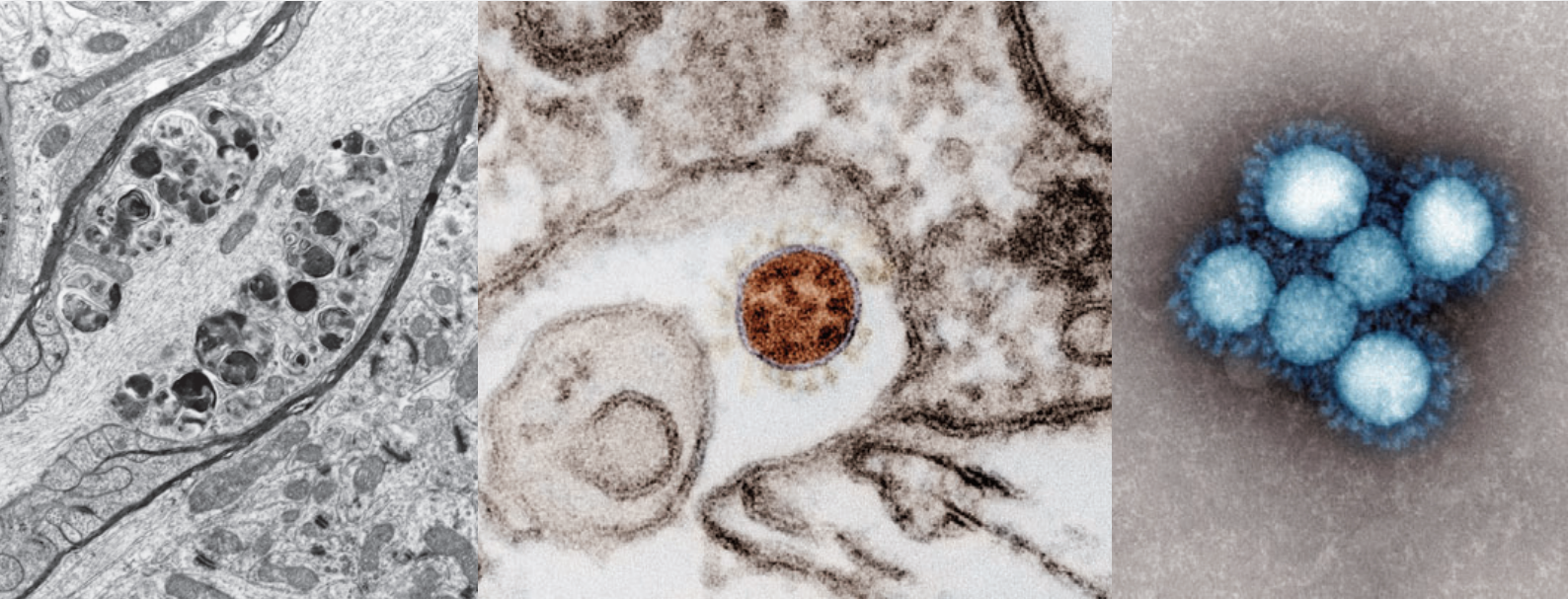
ZMNH

Center for
Molecular
Neurobiology
Hamburg



PANOS 2016 Spring Meeting

April 14–15 in Hamburg



Invited Speakers

Michael Laue

Berlin

Monica Hagedorn

Hamburg

Kay Grünewald

Hamburg/Oxford

and other talks and topics

Electron Microscopy in **Pathology** and **Medicine**

Registration:

<http://www.uke.de/zmnh-panos-2016>
(start January 5th 2016)

Information via mailing list:

[https://listserv.gwdg.de/mailman/
listinfo/panos-list](https://listserv.gwdg.de/mailman/listinfo/panos-list)

Contact:

Dr. Michaela Schweizer

Center for Molecular Neurobiology Hamburg (ZMNH)

Core Facility Electron Microscopy

20251 Hamburg, Germany, Falkenried 94

Tel.: (040) 7410-55084

E-Mail: michaela.schweizer@zmnh.uni-hamburg.de

Supported by: The German Society of Electron Microscopy (DGE),
Carl Zeiss Microscopy, FEI, JEOL (Germany) GmbH, Leica Microsystems,
EMSIS, Diatome, Science Services

Program

Thursday 14th of April

- 17:00 Guided tour Hafencity; current projects and development **Treffpunkt Kesselhaus**
19:00 or later. Get together **Hafenhunger (Hafencity)**

Friday 15th of April

- 9:00 Welcome and opening remarks by Michaela Schweizer
9:10 **Michael Laue** (RKI Berlin), Searching for pathogens by diagnostic electron microscopy – relevance, methods, cases
9:50 **Monica Hagedorn** (BNI Hamburg), How microbacteria exit from the host cell and close the door behind them
10:30 Coffee break / posters
10:50 **Kay Grünwald** (Strubi Oxford/CSSB Hamburg), Combining electron cryo-microscopy with complementary approaches to study virus host interactions
11:30 **Michael Frotscher** (ZMNH Hamburg), Structure-function relationships of giant mossy fiber synapses in the hippocampus
12:10 Lunch and time for individual discussion and Poster exhibition
13:50 PANOS meeting: announcement of the spring meeting 2015, other topics
14:05 **Josef Schröder** (Uni Regensburg), Impact of Electron Microscopy in Clinical Context
14:45 **Martin Westermann** (Uni Jena), Electron microscopic studies on liver dysfunction and phosphatidylinositol-3-kinase signaling in early sepsis
15:00 **Björn Busse** (UKE Hamburg), Human bone: The osteocyte-lacuno-canalicular network in health and disease
15:15 **Michaela Wilsch-Bräuninger** (MPI Dresden), An EM look at neurogenesis
15:30 Coffee break / posters
16:00 **Ines Romero Brey** (Uni Heidelberg), Membranous replication factories induced by hepatotropic viruses: a 3D ultrastructural study
16:15 **Michael Hess** (MU Innsbruck), Cell biology of microvillus inclusion disease (MVID): patient biopsies, mouse and cell culture models
16:30 **Ben Giepmans** (Uni Groningen), Large-scale EM (Nanotomy) of human tissues from the clinic
16:45 **Rudi Reimer** (HPI Hamburg), Environmental SEM in Biomedical Applications
17:00 End of the meeting

DCE DEUTSCHE GESELLSCHAFT FÜR ELEKTRONENMIKROSKOPIE



Universitätsklinikum
Hamburg-Eppendorf

Venue

University Medical Center
Hamburg-Eppendorf (UKE)
Erikahaus W29, Martinistraße 52
20246 Hamburg (Eppendorf)



SCIENCE
SERVICES

Your Partner for
Microscopy and
Lab Supplies